

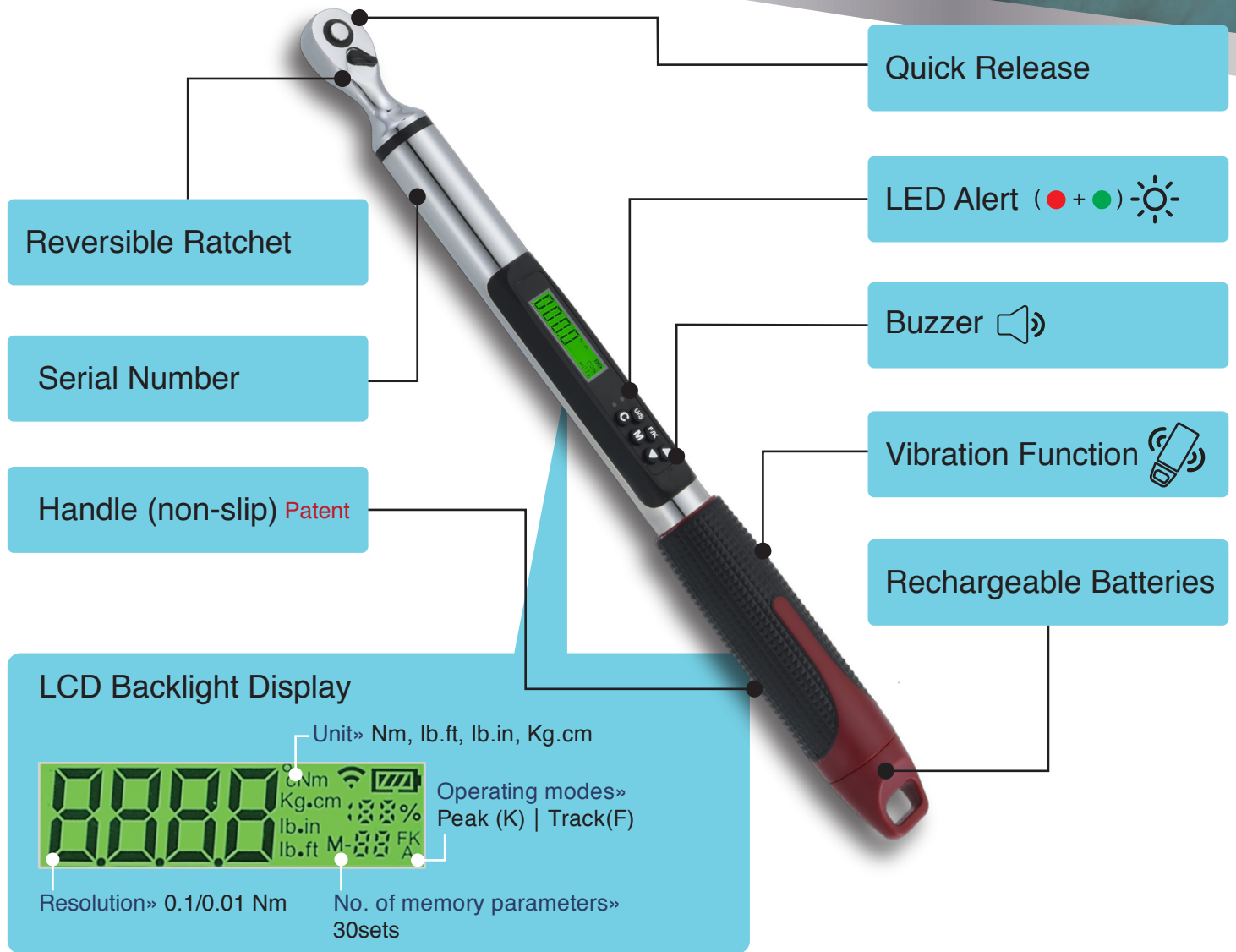


Precision • Innovation • Perfection



- Digital Torque Wrench
- Digital Interchangeable Torque Wrench
- Digital Flexible Torque Wrench
- Digital Torque Adapter

Product Features



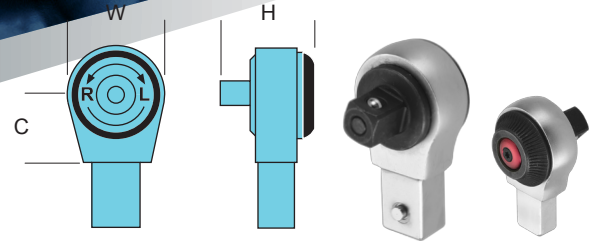
Other Specification

■ Operating temperature» -10°C~ 60°C
 ■ Storage temperature» -20°C~ 70°C
 ■ Humidity» Up to 90% non-condensing
 ■ Battery Life(standard mode)» 1 year
 ■ Battery Life(continuous operation)» 110 hrs. (Adapter series 37hrs.)
 ■ Drop test» 1m
 ■ Shaking test» 10G
 ■ Service life test» 10000 cycles
 ■ Environmental test» PASS
 ■ EMC test» PASS

Torque Conversion Table

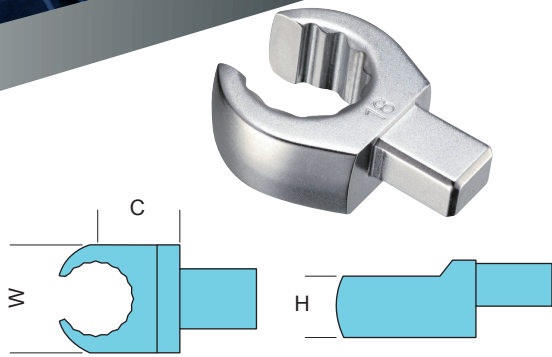
UNIT	mN.m	cN.m	N.m	ozf.in	lbf.in	lbf.ft	gf.cm	kgf.cm	kgf.m
1 mN.m	1	0.1	0.001	0.142	0.009	0.0007	10.2	0.01	0.0001
1 cN.m	10	1	0.01	1.416	0.088	0.007	102	0.102	0.001
1 N.m	1000	100	1	141.6	8.851	0.738	10197	10.2	0.102
1 ozf.in	7.062	0.706	0.007	1	0.0625	0.005	72	0.072	0.0007
1 lbf.in	113	11.3	0.113	16	1	0.083	1152.1	1.152	0.0115
1 lbf.ft	1365	135.6	1.356	192	12	1	13826	13.83	0.138
1 gf.cm	0.098	0.01	0.0001	0.014	0.0009	0.00007	1	0.001	0.00001
1 kgf.cm	98.07	9.807	0.098	13.89	0.868	0.072	1000	1	0.01
1 kgf.m	9807	980.7	9.807	1389	86.8	7.233	100000	100	1

Accessories



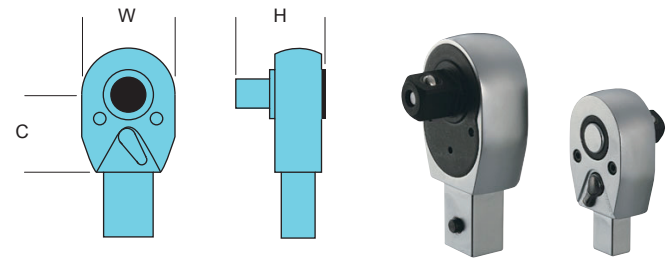
Quick Release Ratchet Insert

Item No.	T	Width (mm)	Height (mm)	C (mm)	Insert Size (mm)	Weight (g)	
20450061	1/4"	52	25	23	17.5	9x12	69
20450062	3/8"	52	34	33	17.5	9x12	143
20450063	1/2"	52	34	38	17.5	9x12	154
20450064	1/2"	52	41	43	25	14x18	300
20450065	3/4"	52	41	51	25	14x18	338



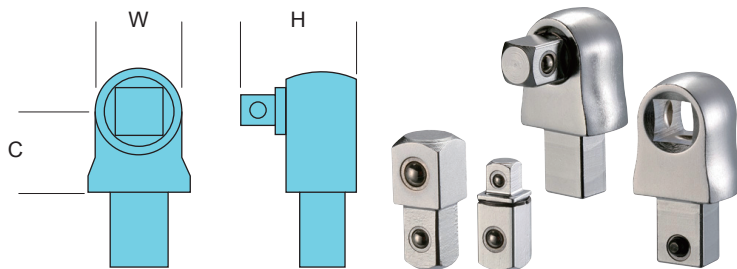
Open Ring Insert 9x12

Item No.	Width (mm)	Height (mm)	C (mm)	Weight (g)
20450076	10mm	21.2	12	57
20450077	11mm	22.6	12	55
20450078	12mm	24.1	12	59
20450079	13mm	25.2	12	55
20450080	14mm	27.3	13	60
20450081	16mm	30.1	13	65
20450082	17mm	31.6	13	64
20450083	18mm	33.3	15	74
20450084	19mm	34.6	15	80
20450085	21mm	37.7	15	88
20450086	22mm	39.3	15	92



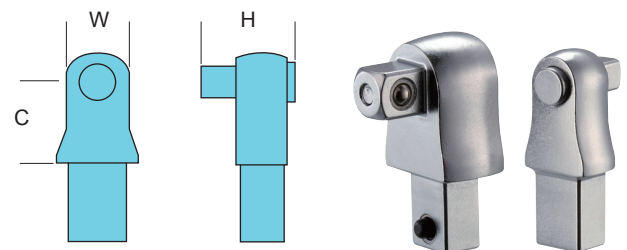
L-Lock-R Ratchet Insert

Item No.	T	Width (mm)	Height (mm)	C (mm)	Insert Size (mm)	Weight (g)	
20450066	1/4"	48	25	21.8	21	9x12	73
20450067	3/8"	48	32	29.7	28	9x12	155
20450068	1/2"	48	32	34.2	28	9x12	170
20450069	1/2"	48	39	37.4	34	14x18	305
20450070	3/4"	48	39	37.4	34	14x18	340



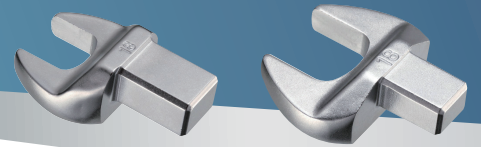
Interchange Square Drive Insert

Item No.	Width (mm)	Height (mm)	C (mm)	Insert Size (mm)	Weight (g)	
20450075	3/8"	13	—	17.5	9x12	58
	1/4"x3/8"	6.35	24.5	—	—	14
	3/8"x3/8"	9.53	27	—	—	18
	1/2"x3/8"	12.7	31	—	—	28



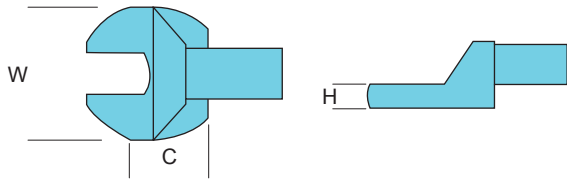
Square Drive Insert

Item No.	Width (mm)	Height (mm)	C (mm)	Insert Size (mm)	Weight (g)	
20450071	1/4"	13	19.5	17.5	9x12	39
20450072	3/8"	19	27	17.5	9x12	74
20450073	1/2"	19	32	17.5	9x12	81
20450074	1/2"	25	35	25	14x18	179



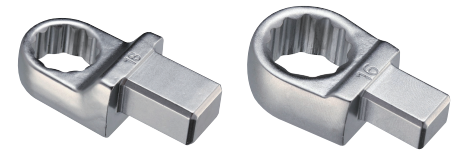
Open Insert 14x18

Item No.	Width (mm)	Height (mm)	C (mm)	Weight (g)	
20450014	13mm	29.7	7	25	128
20450015	14mm	31.1	7	25	129
20450016	15mm	33.4	7	25	132
20450017	16mm	35.8	9	25	140
20450018	17mm	37	9	25	136
20450019	18mm	38.6	9	25	147
20450020	19mm	40.6	9	25	147
20450021	21mm	45.2	11	25	171
20450022	22mm	47.3	11	25	165
20450023	24mm	50.8	11	25	167
20450024	27mm	58.7	14	32.5	219
20450025	30mm	62.7	14	32.5	245
20450026	32mm	65.2	14	32.5	246
20450027	34mm	66.5	14	32.5	239
20450028	36mm	66.5	14	32.5	275
20450029	38mm	66.5	14	32.5	265
20450030	41mm	82.5	14	32.5	307



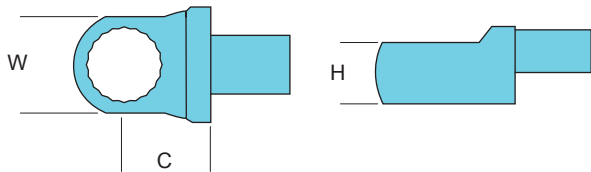
Open Insert 9x12

Item No.	Width (mm)	Height (mm)	C (mm)	Weight (g)	
20450001	7mm	20.7	5.7	17.5	40
20450002	8mm	22	5.7	17.5	39
20450003	9mm	23.5	5.7	17.5	38
20450004	10mm	24.8	5.7	17.5	42
20450005	11mm	26	5.7	17.5	41
20450006	12mm	27.5	5.7	17.5	43
20450007	13mm	28.8	5.7	17.5	48
20450008	14mm	31.5	7.7	20	52
20450009	15mm	33.5	7.7	20	51
20450010	16mm	36	7.7	20	58
20450011	17mm	37.7	7.7	20	60
20450012	18mm	39	7.7	20	71
20450013	19mm	41.6	7.7	20	74



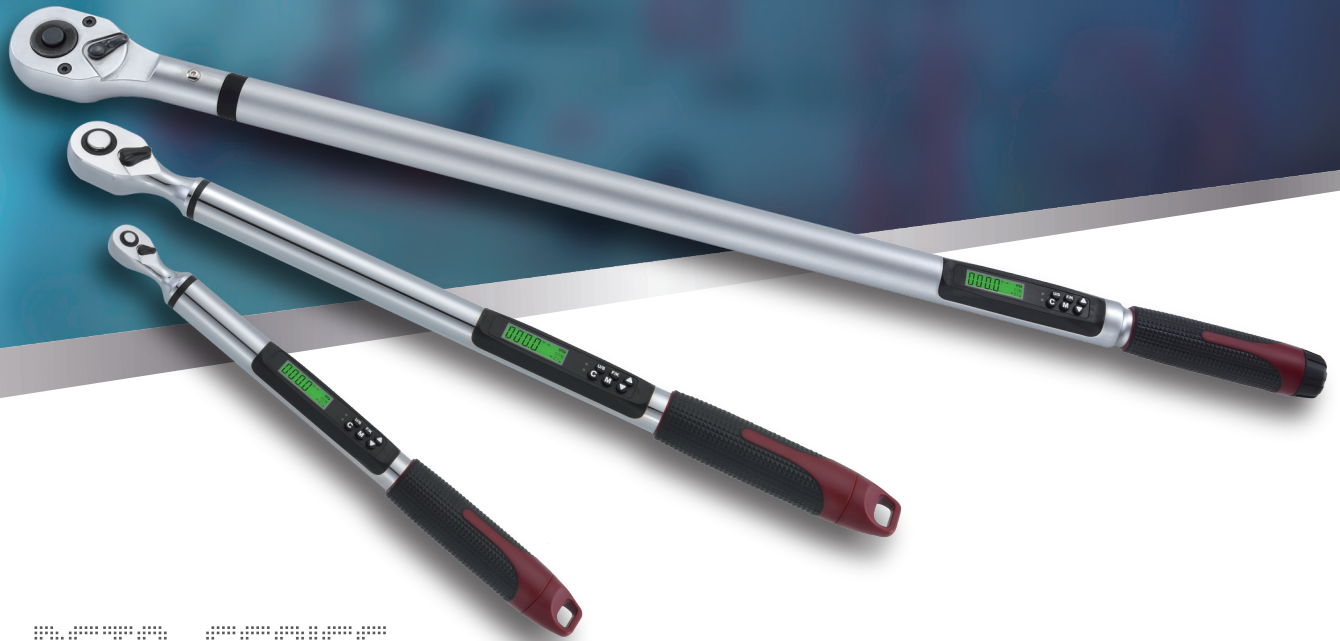
Ring Insert 14x18

Item No.	Width (mm)	Height (mm)	C (mm)	Weight (g)	
20450045	13mm	21	12	25	130
20450046	14mm	23	12	25	123
20450047	15mm	26	12	25	128
20450048	16mm	26	12	25	133
20450049	17mm	27.5	12.5	25	135
20450050	18mm	29.5	12.5	25	134
20450051	19mm	31	12.5	25	138
20450052	21mm	33	15	25	144
20450053	22mm	35	15	25	145
20450054	24mm	38	15	25	153
20450055	27mm	42	17.5	31	162
20450056	30mm	45.1	17.5	31	182
20450057	32mm	48	17.5	31	181
20450058	34mm	51	19	31	210
20450059	36mm	53	19	31	203
20450060	41mm	59.3	19	31	240



Ring Insert 9x12

Item No.	Width (mm)	Height (mm)	C (mm)	Weight (g)	
20450031	7mm	13.1	8	17.5	37
20450032	8mm	13.1	8	17.5	40
20450033	10mm	17.6	8	17.5	44
20450034	11mm	19	8	17.5	41
20450035	12mm	20.3	12.2	17.5	49
20450036	13mm	21.1	12.2	17.5	56
20450037	14mm	23.4	12.2	17.5	52
20450038	15mm	24.4	12.2	17.5	52
20450039	16mm	26.4	13.2	17.5	54
20450040	17mm	27.4	13.2	17.5	59
20450041	18mm	28.9	13.2	17.5	56
20450042	19mm	31	13.2	17.5	65
20450043	21mm	33.4	14.7	17.5	71
20450044	22mm	35	14.7	17.5	74



SH-DGTQ SERIES

Digital Torque Wrench

SPECIFICATION

Accuracy» CW:±1.5% | CCW:±2.5%

Min. Scale Unit» SH-DGTQ30-1(0.01Nm),other(0.1Nm)

Model No.	T	Driver	Max. Operating Range	Setting Range	Max. Torque Load / DIN Standards (Nm)
SH-DGTQ30-1	72	1/4"	30 Nm	1.5~30 Nm 1.11~22.12 lb.ft 13.3~265.5 lb.in 15.3~306.1 kg.cm	88.0/62.0
SH-DGTQ30-2	72	3/8"	30 Nm	1.5~30 Nm 1.11~22.12 lb.ft 13.3~265.5 lb.in 15.3~306.1 kg.cm	294.0/202.0
SH-DGTQ60-2	72	3/8"	60 Nm	3.0~60 Nm 2.22~44.24 lb.ft 26.6~531 lb.in 30.6~612.2 kg.cm	294.0/202.0
SH-DGTQ135-2	72	3/8"	135 Nm	6.8~135 Nm 5.0~99.5 lb.ft 60~1195 lb.in 69~1378 kg.cm	294.0/202.0
SH-DGTQ135-3	72	1/2"	135 Nm	6.8~135 Nm 5.0~99.5 lb.ft 60~1195 lb.in 69~1378 kg.cm	735.0/512.0
SH-DGTQ200-3	72	1/2"	200 Nm	10~200 Nm 7.4~147.5 lb.ft 88~1770 lb.in 102~2041 kg.cm	735.0/512.0
SH-DGTQ340-3	72	1/2"	340 Nm	17~340 Nm 12.5~250.7 lb.ft 150~3009 lb.in 173~3469 kg.cm	735.0/512.0
SH-DGTQ600-4	24	3/4"	600 Nm	60~600 Nm 44.28~442.8 lb.ft 53.11~5311 lb.in 612~6120 kg.cm	1836/1412
SH-DGTQ800-4	24	3/4"	800 Nm	80~800 Nm 59.04~590.4 lb.ft 708.1~7081 lb.in 816~8160 kg.cm	1836/1412
SH-DGTQ800-5	24	1"	800 Nm	80~800 Nm 59.04~590.4 lb.ft 708.1~7081 lb.in 816~8160 kg.cm	3270/2515
SH-DGTQ1000-4	24	3/4"	1000 Nm	100~1000 Nm 73.8~738 lb.ft 885.1 8851 lb.in 10.2~102 kg.m	1836/1412
SH-DGTQ1000-5	24	1"	1000 Nm	100~1000 Nm 73.8~738 lb.ft 885.1 8851 lb.in 10.2~102 kg.m	3270/2515

SH-DGTS SERIES

Digital Torque Adapter



SPECIFICATION

Accuracy» CW:±1.5% | CCW:±2.5%

Min. Scale Unit» 0.1Nm

Model No.	Inches	Max. Operating Range	Setting Range	Max. Torque Load / DIN Standards (Nm)
SH-DGTS135-1	3/8"	135 Nm	6.8~135 Nm 5.0~99.5 lb.ft 60~1195 lb.in 69~1378 kg.cm	306.0/202.0
SH-DGTS200-2	1/2"	200 Nm	10~200 Nm 7.4~147.5 lb.ft 88~1770 lb.in 102~2041 kg.cm	796.0/512.0
SH-DGTS340-2	1/2"	340 Nm	17~340 Nm 12.5~250.7 lb.ft 150~3009 lb.in 173~3469 kg.cm	796.0/512.0



SH-DGTI SERIES

Digital Interchangeable Torque Wrench

SPECIFICATION

Accuracy» CW:±2% | CCW:±3%

Min. Scale Unit» SH-DGTI30-1(0.01Nm),other(0.1Nm)

Model No.	Driver/Insert	Max. Operating Range	Setting Range	Max. Torque Load / DIN Standards (Nm)
SH-DGTI30-1	1/4" 9x12mm	30 Nm	3~30 Nm 2.22~22.12 lb.ft 26.6~265.5 lb.in 30.6~306.1 kg.cm	88.0/62.0
SH-DGTI60-2	3/8" 9x12mm	60 Nm	6~60 Nm 4.22~44.24 lb.ft 53.2~531 lb.in 61.2~612.2 kg.cm	294.0/202.0
SH-DGTI135-2	3/8" 9x12mm	135 Nm	13.5~135 Nm 10~99.5 lb.ft 120~1195 lb.in 138~1378 kg.cm	294.0/202.0
SH-DGTI135-3	1/2" 14x18mm	135 Nm	13.5~135 Nm 10~99.5 lb.ft 120~1195 lb.in 138~1378 kg.cm	735.0/512.0
SH-DGTI200-3	1/2" 14x18mm	200 Nm	20~200 Nm 14.8~147.5 lb.ft 176~1770 lb.in 204~2041 kg.cm	735.0/512.0
SH-DGTI340-3	1/2" 14x18mm	340 Nm	34~340 Nm 25~250.7 lb.ft 300~3009 lb.in 346~3469 kg.cm	735.0/512.0

SH-DGTF SERIES

Digital Flexible Torque Wrench

SPECIFICATION

Accuracy» CW:±2% | CCW:±3%

Min. Scale Unit» SH-DGTF30-1(0.01Nm),other(0.1Nm)

Model No.	T	Driver	Max. Operating Range	Setting Range	Max. Torque Load / DIN Standards (Nm)
SH-DGTF30-1	72	1/4"	30 Nm	3~30 Nm 2.22~22.12 lb.ft 26.6~265.5 lb.in 30.6~306.1 kg.cm	88.0/62.0
SH-DGTF135-2	72	3/8"	135 Nm	13.5~135 Nm 10~99.5 lb.ft 120~1195 lb.in 138~1378 kg.cm	294.0/202.0
SH-DGTF200-3	72	1/2"	200 Nm	20~200 Nm 14.8~147.5 lb.ft 176~1770 lb.in 204~2041 kg.cm	735.0/512.0
SH-DGTF340-3	72	1/2"	340 Nm	34~340 Nm 25~250.7 lb.ft 300~3009 lb.in 346~3469 kg.cm	735.0/512.0

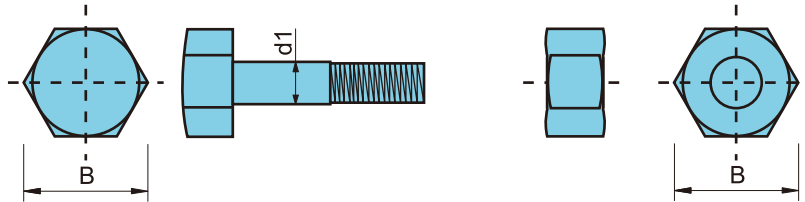
Packing Specification



Model No.	Wrench Length (Size)	Wrench Weight (kg)	Box Size L x W x H (mm)	Quantity (pcs)	N.W (kg)	G.W (kg)	CARTON L x W x H (cm)	CUFT
SH-DGTQ30-1	410 mm	0.72	476x118x65	8	13.80	14.90	48.8x24.2x25.5	1.06
SH-DGTQ30-2	410 mm	0.74	476x118x65	8	14.60	15.80	48.8x24.2x25.5	1.06
SH-DGTQ60-2	410 mm	0.74	476x118x65	8	14.60	15.80	48.8x24.2x25.5	1.06
SH-DGTQ135-2	434 mm	0.89	595x116x65	6	14.16	15.16	60.6x24.2x19.7	1.02
SH-DGTQ135-3	454mm	1.08	595x116x65	6	15.24	16.24	60.6x24.2x19.7	1.02
SH-DGTQ200-3	565 mm	1.30	712x116x65	4	12.16	13.16	72.7x24.2x13.6	0.84
SH-DGTQ340-3	666 mm	1.42	712x116x65	4	12.56	13.56	72.7x24.2x13.6	0.84
SH-DGTQ600-4	940 mm	3.80	1265x145x100	1	9.60	10.10	126.5x14.5x10	0.65
SH-DGTQ800-4	1235 mm	4.80	1265x145x100	1	10.70	11.00	126.5x14.5x10	0.65
SH-DGTQ800-5	1240 mm	5.10	1265x145x100	1	11.90	13.10	126.5x14.5x10	0.65
SH-DGTQ1000-4	1235 mm	4.80	1265x145x100	1	10.70	11.00	126.5x14.5x10	0.65
SH-DGTQ1000-5	1240 mm	5.10	1265x145x100	1	11.90	13.10	126.5x14.5x10	0.65
SH-DGTI30-1	403 mm	0.75	476x118x65	8	14.02	15.01	48.8x24.2x25.5	1.06
SH-DGTI60-2	413 mm	0.80	476x118x65	8	14.40	15.20	48.8x24.2x25.5	1.06
SH-DGTI135-2	425 mm	0.90	595x116x65	6	12.48	13.10	60.6x24.2x19.7	1.02
SH-DGTI135-3	435 mm	0.95	595x116x65	6	12.78	13.48	60.6x24.2x19.7	1.02
SH-DGTI200-3	559 mm	1.35	712x116x65	4	11.24	11.84	72.7x24.2x13.6	0.84
SH-DGTI340-3	665 mm	1.50	712x116x65	4	11.84	12.54	72.7x24.2x13.6	0.84
SH-DGTF 30-1	409 mm	0.72	476x118x65	8	13.80	14.90	48.8x24.2x25.5	1.06
SH-DGTF135-2	434 mm	0.89	595x116x65	6	14.16	15.16	60.6x24.2x19.7	1.02
SH-DGTF200-3	565 mm	1.30	712x116x65	4	12.16	13.16	72.7x24.2x13.6	0.84
SH-DGTF340-3	666 mm	1.42	712x116x65	4	12.56	13.16	72.7x24.2x13.6	0.84
SH-DGTS135-1	75x42x39 mm	0.19	113x105x67	10	5.01	5.05	34.3x22.4x13	0.35
SH-DGTS200-2	75x42x39 mm	0.18	113x105x67	10	5.01	5.05	34.3x22.4x13	0.35
SH-DGTS340-2	75x42x39 mm	0.18	113x105x67	10	5.01	5.05	34.3x22.4x13	0.35

Technical Data

Strength Contrast of Screw and Nut



Unit:N-m

Size of Nut (B)	Size of Screw (d1)	Class Level				
		4.6	6.8	8.8	10.9	12.9
4.5mm	M2	0.12	0.238	0.319	0.447	0.536
5mm	M2.5	0.245	0.487	0.65	0.915	1.1
5.5mm	M3	0.434	0.87	1.16	1.63	1.96
6mm	M3.5	0.683	1.37	1.82	2.56	3.08
7mm	M4	1.01	2.02	2.7	3.79	4.54
8mm	M5	2.04	4.09	5.47	7.67	9.18
10mm	M6	3.47	6.97	9.27	13	15.6
11mm	M7	5.85	11.6	15.5	21.8	26.2
13mm	M8	8.41	16.9	22.5	31.6	37.9
17mm	M10	16.7	33.4	44.5	62.6	75.2
19mm	M12	29.1	58.3	77.6	109	131
22mm	M14	46.4	92.7	124	174	209
24mm	M16	72.3	145	194	271	325
27mm	M18	100	199	266	373	447
30mm	M20	141	282	376	529	635
32mm	M22	192	384	511	720	865
36mm	M24	244	488	650	915	1100
41mm	M27	358	713	951	1340	1610
46mm	M30	484	971	1290	1820	2180
50mm	M33	661	1320	1760	2470	2970
55mm	M36	848	1690	2260	3180	4020
60mm	M39	1100	2190	2920	4110	4930
65mm	M42	1350	2710	3610	5080	6080
70mm	M45	1700	3400	4540	6370	7630
75mm	M48	2030	4060	5440	7620	9120
80mm	M52	2640	5290	7040	9880	11800
85mm	M56	3270	6560	8710	12300	14800
90mm	M60	4080	8180	10900	15300	18300
95mm	M64	4930	9890	13100	18500	22300
100mm	M68	5970	12000	16000	22500	27000
105mm	M72	7150	14400	19100	26900	32300
110mm	M76	8540	17000	22700	31900	38300
115mm	M80	10000	20000	26600	37500	45000

Note : (1) Class 4.6 and 6.8 ar for DIY use. (3) Class 10.9 is for pneumatic and professional use.
 (2) Class 8.8 is for general use. (4) Class 12.9 is for industrial use.

